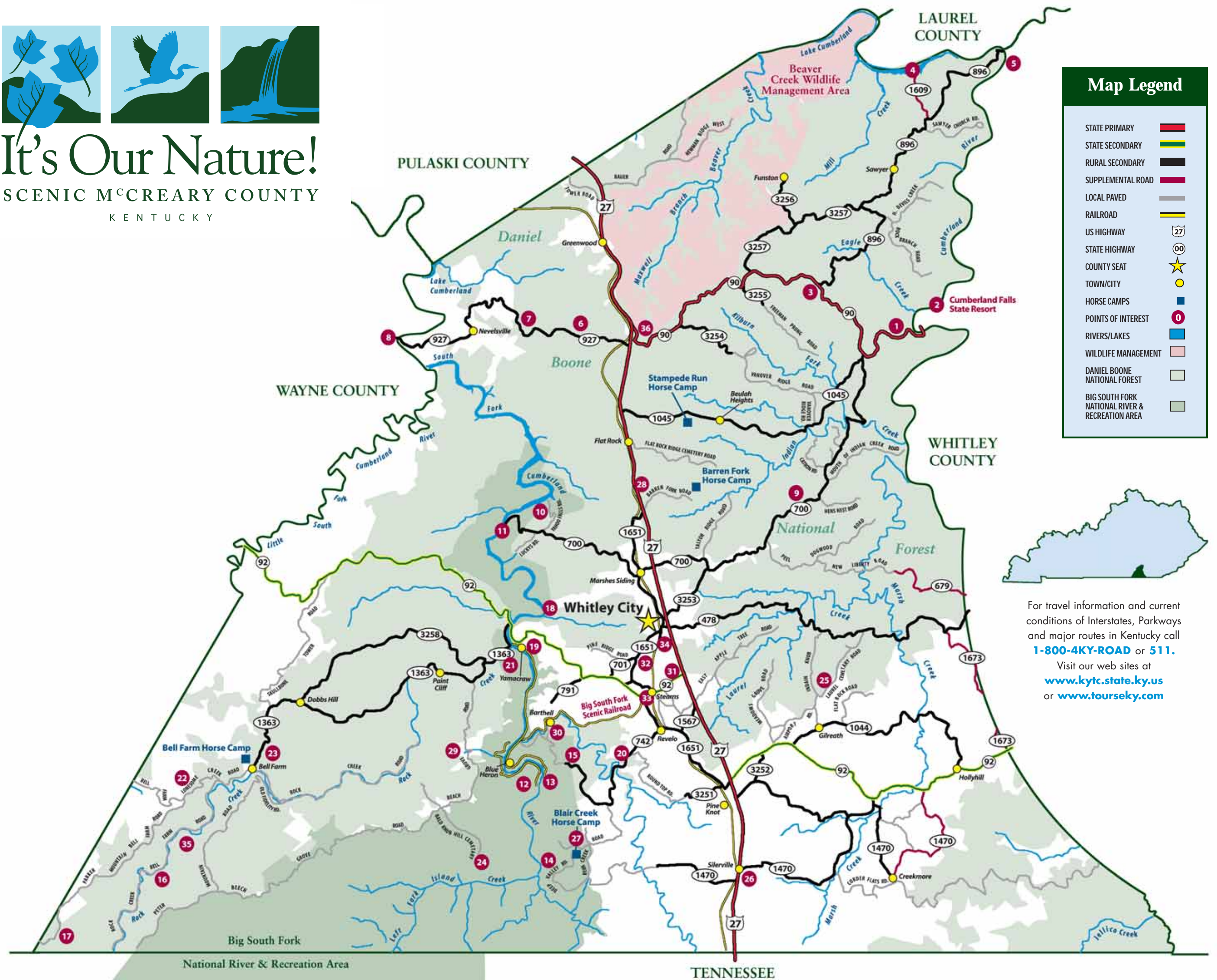




# It's Our Nature!

## SCENIC McCREARY COUNTY

KENTUCKY



STATE PRIMARY	
STATE SECONDARY	
RURAL SECONDARY	
SUPPLEMENTAL ROAD	
LOCAL PAVED	
RAILROAD	
US HIGHWAY	
STATE HIGHWAY	
COUNTY SEAT	
TOWN/CITY	
HORSE CAMPS	
POINTS OF INTEREST	
RIVERS/LAKES	
WILDLIFE MANAGEMENT	
DANIEL BOONE NATIONAL FOREST	
BIG SOUTH FORK NATIONAL RIVER & RECREATION AREA	

For travel information and current conditions of Interstates, Parkways and major routes in Kentucky call **1-800-4KY-ROAD** or **511**.  
 Visit our web sites at [www.kytc.state.ky.us](http://www.kytc.state.ky.us) or [www.tourseky.com](http://www.tourseky.com)

## Points of Interest

- Eagle Falls** On a tributary to the Cumberland River
- Cumberland Falls & Cumberland Falls State Park** On the Cumberland River. Hwy. 90 at McCreary/Whitley County Line
- 4-H Craft Center** Hwy. 90/HC 83, Box 283, Parkers Lake
- Sawyer Boat Launch Ramp** Off Hwy. 90, Mill Creek Rd. on the Cumberland River
- Noe's Boat Dock** Off Hwy. 90, off Mill Creek Rd.
- Natural Arch** Hwy. 927, Parkers Lake
- Great Gulf Overlook** Hwy. 927, Parkers Lake
- Turkey Creek Boat Launch Ramp** End of Hwy. 927, on the Big South Fork of the Cumberland River
- Sand Hill Camp** RV and Tent Camping, Hwy. 700 E., Whitley City
- Yahoo Falls** Restrooms in Parking Lot, Off Hwy. 700 W., Marshes Siding, KY.
- Alum Fork Boat Ramp & Campsite** End of Hwy. 700 W., Big South Fork of Cumberland River
- Blue Heron Mining Camp** Food, bathrooms, canoe put-in, hiking & horse trails, outdoor interpretive museum, End of KY 742 on Big South Fork of Cumberland River.
- Devil's Jump** Big South Fork of Cumberland River
- Bear Creek Overlook** No Facilities, Gaging Station Road at Big South Fork.
- Blue Heron Campground** Tent or RV Campsites with electricity, water & bathhouse, Hwy. 742 in Blue Heron Recreation
- Great Meadows Campsites** Tent camping, restrooms & water, Bell Farm Rd., S.E. McCreary County
- Buffalo Arch** Parker's Mountain Rd.
- Princess Falls** Access Trails at Yamacraw Bridge Hwy. 92
- Lick Creek Falls** Access Trails at Yamacraw Bridge, Hwy. 92
- Wagon Wheel Arch** Hwy. 742 (BSFNRA)
- Koger Arch** State Rt. 1363 at Yamacraw
- Hollow Lock Arch** Off Lonesome Creek Rd., off Rt. 1363
- Hickory Knob Arch** Foster Rd. near Bell Farm
- First Oil Well** Bald Knob Hill Cemetery Rd. at the Big South Fork of the Cumberland River
- McCreary County Airport** Laurel Cemetery Rd., off Indian Knob Rd. & Hwy. 92 E.
- Bobby Duncan's General Store** Grocery, gas, farm supplies, old time general store, Hwy. 1470, Strunk
- Blair Creek Horse Camp & Resort** 15 minutes off Hwy. 27, adjacent to the BSFNRA horse trail
- Stearns District Ranger Station & Information Center** U.S. Forest Service, Hwy. 27 at Hwy. 1651, Whitley City
- Dick's Gap Overlook Trail** follows a wide gravelled path from the end of Dick Gap Road to the BSFNRA newest overlook
- Barthell Mining Camp** Cabins, shopping & food, Barthell Rd. off Hwy. 742, Stearns
- BSFNRA Stearns Visitor & Information Center** Hwy. 27, 500 yards off Hwy. 92. Stearns National Historic District
- McCreary County Museum at Stearns** Local History Museum Henderson St., Stearns
- Big South Fork Scenic Railway** Food, shopping, antiques & crafts. Hwy. 92 at 1651, Stearns
- Stearns Golf Course** Butler Dr. & Golf Course Rd., Stearns
- Hemlock Grove Picnic Area** Picnic shelter with restrooms, S.W. McCreary County
- Junkyard Pottery** Junction Hwy. 27 and E. 90, Parkers Lake